

PRODUCT INTRODUCTION

产品介绍

产品—轴承

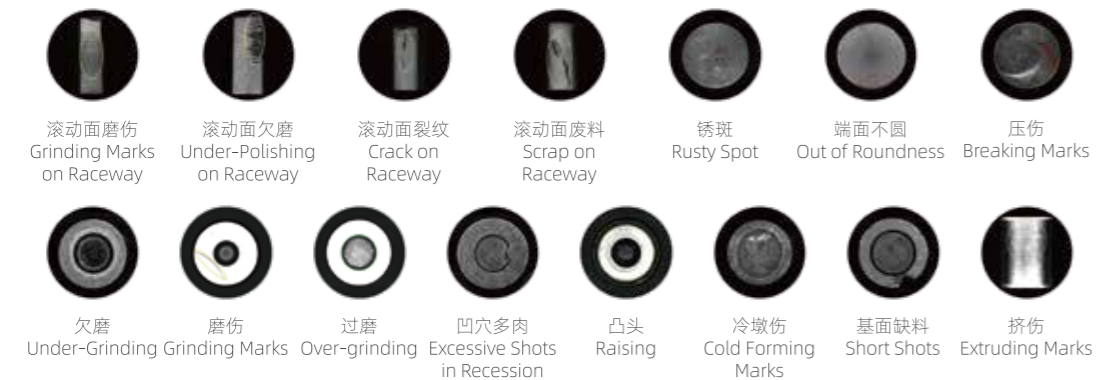
滚子外观缺陷光学自动检测设备
AOI Machine for
Roller Appearance Defects

滚子外观缺陷光学自动检测设备,专业用于检测滚子外圆和两端、倒角、凹穴等外观缺陷,成功突破了360度全检和检测速度之间的矛盾,实现了滚子外圆360度快速检测,适配,速度达到1.2万件每小时,可在各种环境下进行7*24小时不间断工作。

该设备拥有专利证书、软件著作权,依托于各项技术的研发,获得浙江省国内首台(套)重大技术装备及关键部件产品认定。先进的检测技术使检测功能更齐全,友好的人机界面使人工操作更便捷,涵盖数十亿粒滚子缺陷的数据库使得检测数据更准确,设备整体已达到国际领先水平。

Automatic Optical Inspection Machine for Roller Appearance Defects is a professional inspection machine for outer ring and both ends of rollers, which successfully broke through the dilemma between inspection angel and inspecting speed, achieving 360 degree comprehensive detection. In addition, new chamfer detection, dent detection, multi-model configuration and other functions are added. Inspecting speed reaches 12,000pcs per hour, 7*24 hours uninterrupted operation under a variety of environments.

The equipment has patent certificate and software copyright. Relying on the research and development of various technologies, it has been recognized as the first major technical equipment and key components product. Advanced detection technology makes the detection function more complete, friendly man-machine interface makes the manual operation more convenient. What's more, the database covering hundreds of millions of roller defects makes the detection data more accurate. Now our detection technology has reached the international leading level.



检测项目 Inspection Items			
滚道面外观缺陷 Raceway Appearance Defects	欠磨、磨伤、过磨、缺料、压伤、锈斑、擦伤、划伤、磕碰伤等外观缺陷。 Under-grinding, grinding marks, over-grinding, excessive shots in recession, raising overhangs, cold forming marks, short shots, breaking marks, rust, spots, out of roundness of ends, etc.		
两端面及倒角外观缺陷 Both Ends & Chamfers Appearance Defects	端面磨伤、欠磨、裂纹、废料、倒角、凹坑、缺料磕碰等缺陷。 Defects such as end face abrasion, underwear, cracks, scrap, chamfers dents, missing materials, and collisions.		
检测范围 Inspection Range	Ø 5-25mm, L 5-50mm (Quick Model Change) (一键换型)		
检测要求 Requirements	工件表面干净, 无油污 Clean surface, no grease		
检测速度 Inspection Speed	7,200-12,000pcs/h		
平均无故障时间 Mean Time Between Failure	10,000H	检测精度 Precision	0.3mm
光学分辨率 Optical Resolution	0.05mm	电源电压 Voltage	220V,50HZ
功率 Power	2000W	设备气源 Air Supply	0.5 ~ 0.8MPa
尺寸/重量 Dimension/Weight	1.5m*1.7 m*2.5 m / 500kg		
系统工作环境 Work Environment	温度: 5°C~30°C 相对湿度: <70%Rh Temperature: 5°C~30°C Relative Humidity: <70%Rh.		
其它特性 Other Characteristics	1、实时显示检测状态及NG品数量报警。 2、设备软件具有远程技术支持功能。 1. It displays real-time detection status and alarm the quantity of NG products. 2. It supports remote debugging.		